

Entry / ECO

Standard / STD

Professional / PRO

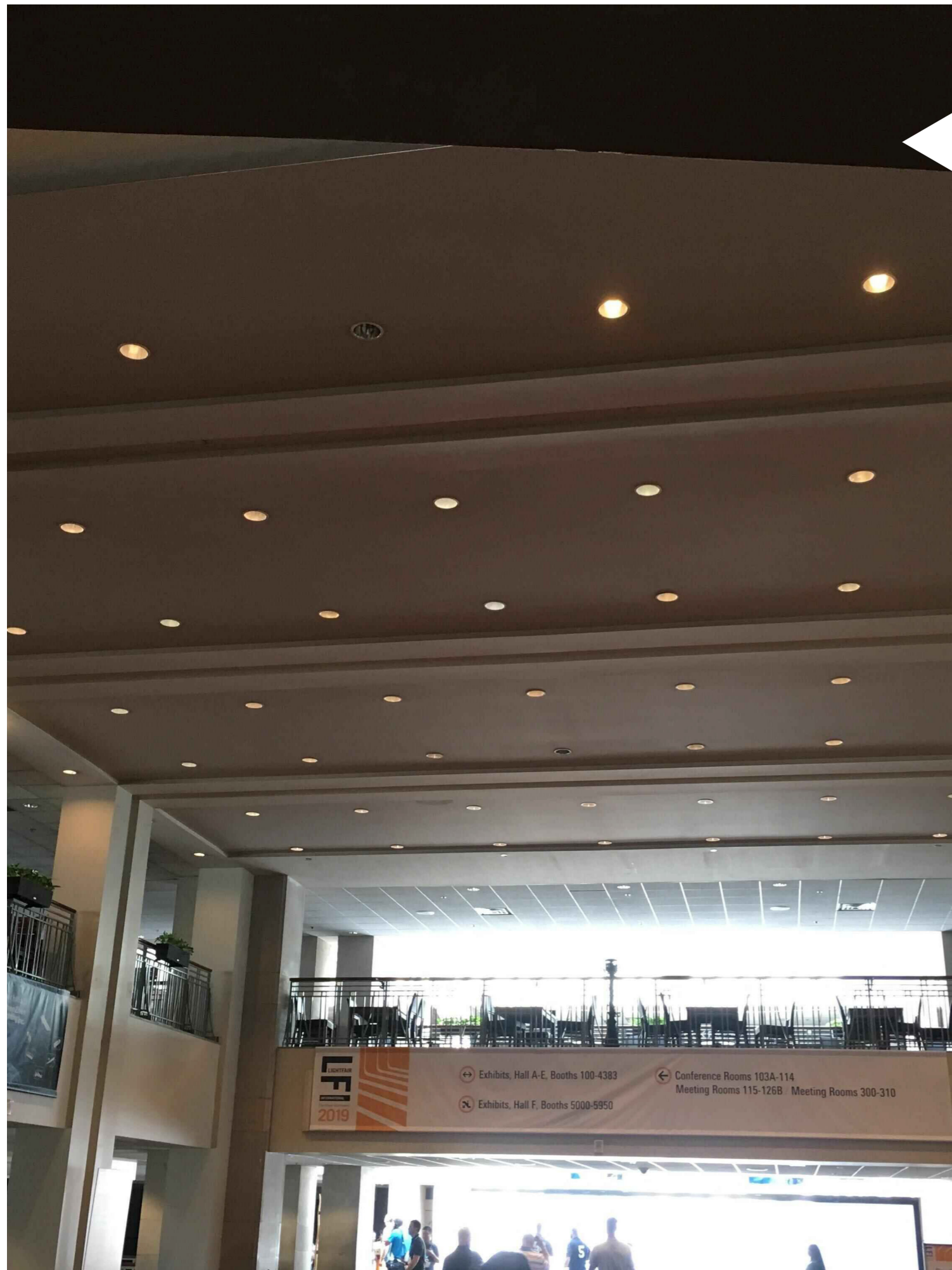
ODM & OEM

Intelligent / INT



LED DownLight
DL254 Series





Introduction

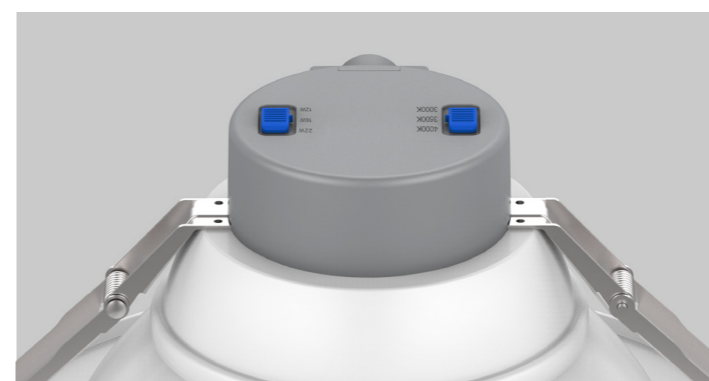
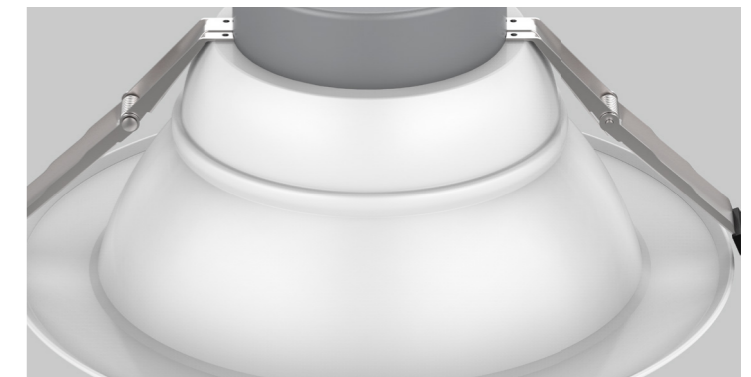
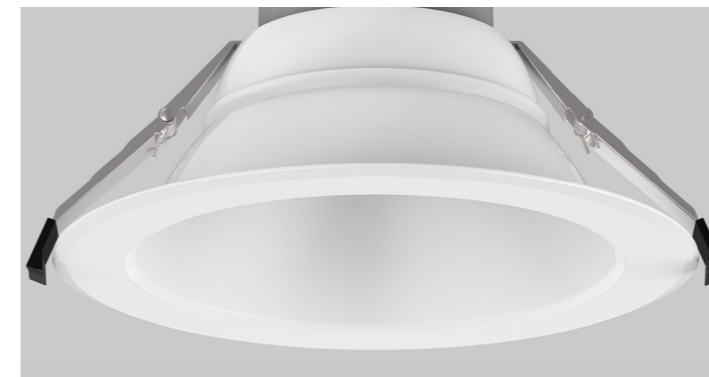
This downlight is a compact design, 2835 SMD chip and high transmittance PC cover provide a uniform lighting output. Aluminum housing offers a great thermal management. Besides, it has a convenient mounting design, which makes a quick installation and easier maintenance. This fitting can be used for retrofit or new construction installation.

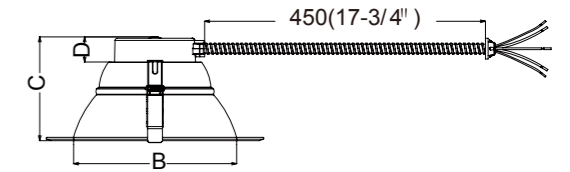
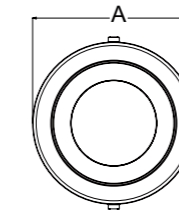
Features

- Complete size 4/6/8/10inch options
- High lumen efficiency, 100-115LPW.
- Wet location, IC and airtight rated.
- 3CCT Adjustable 3000K+3500K+4000K or other options.
- Adjustable power option.
- Internal flicker free driver.
- 0-10V dimming.
- Deep recessed light source, lower glare.

Application Areas

Suitable for commercial and residential applications like offices, supermarkets, shops, schools, hotels, restaurants, workshop.





Technical Data Sheet

Code No.	DL254-4-12W-OAC3	DL254-6-16W-OAC3	DL254-6-33W-OAC3	DL254-8-22W-OAC3	DL254-10-33W-OAC3	
Dimension(Inch/mm)	Ø5-15/16"×3-5/8"	Ø8-5/16"×4-3/8"		Ø10-5/16"×4-7/8"	Ø11-9/16"×5-1/2"	
Cutout (mm)	Ø4"~5-1/4"	Ø6-3/16"~7-1/2"		Ø8"~9-1/2"	Ø8-7/8"~10-5/8"	
Watt(W)	6/8/12W	8/12/16W	20/26/33W	12/16/22W	22/28/33W	
Rated Input Voltage(V)	120V-277V					
Input Voltage(V)	AC100-305V		AC108-305V	AC100-305V		
LED Module Input	-					
Light Source	SMD					
SDCM	<6					
CCT(K)	3-CCT: 3000K + 3500K + 4000K / 3000K+4000K+5000K					
CCT Selection DIP Switch	YES					
Luminous Flux (lm) ±5%	Non-DIM	-				
	DIM	-				
	Non-DIM	1-CCT	-			
		3-CCT CRI80	6W: 540-570 8W: 700-740 12W: 940-1000	8W: 760-790 12W: 1050-1100 16W: 1320-1420	20W: 2250-2450 26W: 2800-3150 33W: 3550-3900	12W: 1210-1280 16W: 1570-1680 22W: 2160-2350
DIM	3-CCT CRI90	6W: 450-470 8W: 580-610 12W: 780-830	8W: 630-660 12W: 870-910 16W: 1100-1180	20W: 1560-1650 26W: 1950-2120 33W: 2400-2600	12W: 1000-1060 16W: 1300-1400 22W: 1790-1950	22W: 1718-1798 28W: 2110-2272 33W: 2447-2649
	CRI 80 / 90					
Beam Angle (°)	80°			90°		
UGR	-					
LED Driver	built-in					
Dimming Option	0-10V					
Sensor	-					
Emergency Kits	-					
Electrical Class	Class I					
Ingress Protection (IP Rating)	Wet location					
Impact Resistance (IK Rating)	-					
Product Finishing(Base)	White RAL 9016					
Materials of Optics	PC					
Materials of Housing	PC/Aluminum					
Lifetime (hr)	50,000h					
Glow wire test (°C)	850°C					
Operating Temp. (°C)	25°C					
Storage Temp. (°C)	-20°C ~65°C					
Installation	Recessed					

Measurement

Code	Dimension(Inch/mm)				Size(Inch/mm)	Product Weight (Kg)		Package weight (Kg)		Carton Size (Inch/cm)	Qty/CTN	20GP (pcs)	40HQ (pcs)
	A	B	C	D		N.W/PC	G.W/PC	N.W/CTN	G.W/CTN				
DL254-4-12W	5-15/16"	3-13/16"	3-5/8"	1-1/4"	Ø5-15/16"×3-5/8"	0.30	0.40	9.48	10.28	53.9*33.6*51.3	24	6921	17520
DL254-6-16W DL254-6-33W	8-5/16"	5-15/16"	4-3/8"	1-1/4"	Ø8-5/16"×4-3/8"	0.51	0.68	8.01	8.98	47*45.4*45	12	3600	7320
DL254-8-22W	10-5/16"	7-7/8"	4-7/8"	1-1/4"	Ø10-5/16"×4-7/8"	0.68	0.9	10.8	12.4	58*55.2*49	12	1968	5088
DL254-10-33W	11-9/16"	8-5/8"	5-1/2"	1-1/4"	Ø11-9/16"×5-1/2"	0.75	1.05	6.05	7.21	62.8*33*53.8	6	1512	3870

Driver Datasheet (0-10V)

Total load wattage		6W/8W/12W	8W/12W/16W	12W/16W/22W	20W/26W/33W	22W/28W/33W	
Output	Output Voltage range	30-40V				60-75V	30-40V
	Rated output current	150mA/200mA/280mA	200mA/300mA/380mA	300mA/400mA/530mA	280mA/360mA/460mA	550mA/700mA/800mA	
	Line Regulation	±5%					
	Setup, Rise Time	<1S@120V;<0.5S@277V					
	Flickering Index	<10%					
Input	Input Voltage	100-305V			108-305V	100-305V	
	Rated Input Voltage(V)	120-277V					
	Frequency	60HZ					
	Input Current	0.07A/0.09A/0.14A	0.09A/0.14A/0.18A	0.14A/0.18A/0.25A	0.21A/0.27A/0.34A	0.25A/0.32A/0.37A	
	Rated Input Current	0.06A/0.08A/0.12A	0.08A/0.12A/0.15A	0.12A/0.15A/0.21A	0.19A/0.25A/0.31A	0.21A/0.26A/0.31A	
	Power Factor	0.8/0.9/0.9			0.85/0.9/0.9	0.8/0.9/0.9	
	THD	<20% @277V					
	Efficiency	≥77%/≥78%≥80%	≥81%/≥82%≥83%	≥82%/≥83%≥83%	≥87%/≥88%≥89%	≥83%/≥84%≥85%	
No load wattage	≤1W						
Protection	Short circuit protection	Pass					
	Over voltage protection	Pass					
	Over temperature protection	Pass					
Safety & EMC	Withstand voltage	I/P-O/P:3.75KVac, <5mA 60S; I/P-FG:1.6KVac, <5mA 60S; O/P-FG:0.5KVac, <5mA 60S			I/P-O/P:3.75KVac, <5mA 60S; I/P-FG:1.6KVac, <5mA 60S; O/P-FG:0.5KVac, <5mA 60S		
	Isolation Resistance	I/P-O/P: 500VDC, ≥100M Ω					
	Surge	ring-wave interference 2500V					
	EMC Emission	FCC part 15B					
	EMC Immunity	EN61000-4-2,3,4,5,6,8,11; EN61547					