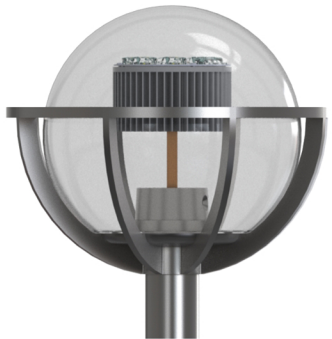


F332-LED SERIES

SPECIFICATIONS



Housing

Made from heavy duty cast aluminum to withstand harsh weather.

Hardware

All exposed hardware is made of durable stainless steel, with industrial strength seals.

Interior Design & Optical

Energy efficient LED driver is mounted on a removable plate, with quick disconnect wiring to allow easy driver maintenance.

L70 at 50,000 hours with CRI≥70.

Exterior Design & Finish

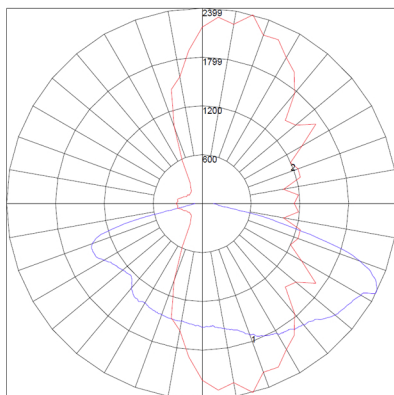
Luminaire is designed to fit post top mounting or pendant mounting with our ornamental arms and poles, and is suitable for wet locations.

Finish is electrostatically applied with thermoset polyester powder-coat.

SIZES

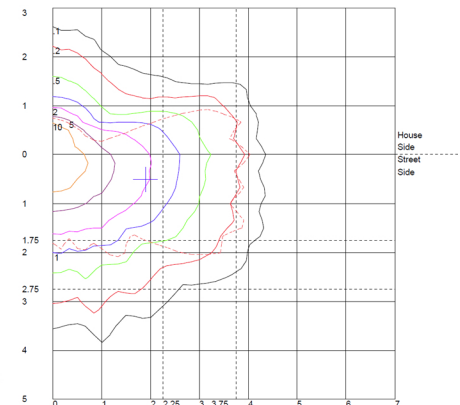
	length	width	height	weight	tenon size	EPA
Large	16"	16"	23"	25 lbs	3"(W) x 4"(L)	1.65 ft ²
Small	-	-	-	-	-	-

PHOTOMETRICS



← polar graph

SAMPLE ILLUSTRATION
IES type III, short



ISO footcandle →

PRODUCT	FITTER	DIFFUSER TYPE	WATTAGE	CCT	VOLTAGE	OPTICS	OPTIONS	FINIALS	COLOR	
F332-L	N/A	CAC CLEAR ACRYLIC	LED	CORN LAMP	3000K	120V~277V	IES TYPE	CHY	N/A	STANDARD RAL
			35W	27W	4000K	II (2)	DECORATIVE CHIMNEY	6005 GREEN		
		50W	36W	5000K	III (3)	DIM	7012 GREY			
		55W	45W	6000K	IV (4)		8019 BRONZE			
		70W	54W	± 10% VARIANCE	STEP DOWN TRANSFORMER	V (5)	9011 BLACK			
		80W	80W		347V	9016 WHITE				
		90W	80W	480V	FUS	*TEXTURE AVAILABLE				
		120W		INTERNAL FUSING		CUSTOM RAL				
		WPC	CUSTOM	PCB						
		WHITE ACRYLIC		BUTTON TYPE PHOTOCELL						
WPC		HSS								
WHITE POLYCARBONATE		HOUSE SIDE SHIELD								
		TWL								
		TWIST LOCK SYSTEM								

Product ordering sample

F332 - L - CAC - LED35W - 3000K - 120~277V - TYPE II - CHY - RAL9011 BLACK