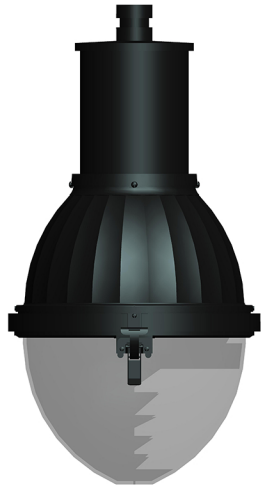


F206-LED SERIES

SPECIFICATIONS



Housing

Made from heavy duty cast aluminum to withstand harsh weather.

Hardware

All exposed hardware is made of durable stainless steel, with industrial strength seals.

Interior Design & Optical

Energy efficient LED driver is mounted on a removable plate, with quick disconnect wiring to allow easy driver maintenance.

L70 at 50,000 hours with CRI≥70.

Exterior Design & Finish

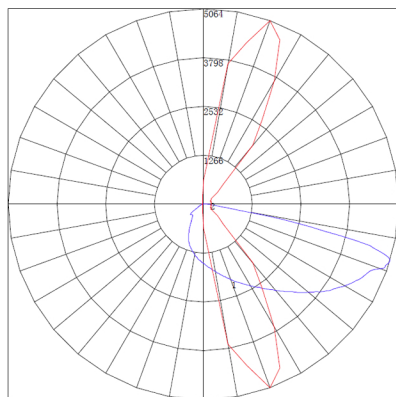
Luminaire is designed to fit post top mounting or pendant mounting with our ornamental arms and poles, and is suitable for wet locations.

Finish is electrostatically applied with thermoset polyester powder-coat.

SIZES

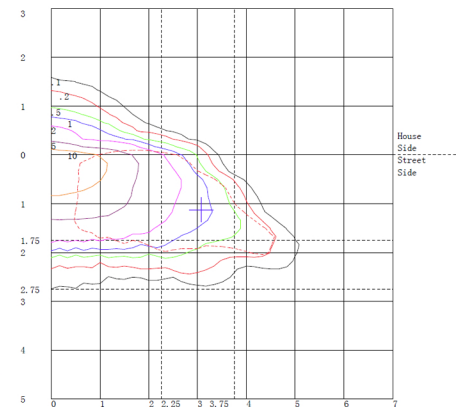
	length	width	height	weight	tenon size	EPA
Large	14"	14"	25"	18 lbs	3"(W) x 4"(L)	1.10 ft ²
Small	-	-	-	-	-	-

PHOTOMETRICS



← polar graph

SAMPLE ILLUSTRATION
IES type III, medium



ISO footcandle →

PRODUCT	FITTER	DIFFUSER TYPE	WATTAGE	CCT	VOLTAGE	OPTICS	OPTIONS	FINIALS	COLOR
F206-L	N/A	CAC CLEAR ACRYLIC	LED	3000K	120V~277V	IES TYPE II (2) III (3) IV (4) V (5)	DIM DIMMING CONTROL	N/A	STANDARD RAL 6005 GREEN 7012 GREY 8019 BRONZE 9011 BLACK 9016 WHITE *TEXTURE AVAILABLE
			35W	4000K					
			50W	5000K					
			55W	6000K					
			70W	± 10% VARIANCE					
		80W	480V	FUS INTERNAL FUSING					
		90W	STEP DOWN TRANSFORMER 347V						
		120W							
		CUSTOM			PCB BUTTON TYPE PHOTOCELL				
	HSS HOUSE SIDE SHIELD								
		TWL TWIST LOCK SYSTEM							

Product ordering sample

F206 - L - CAC - LED35W - 3000K - 120~277V - TYPE II - DIM - RAL9011 BLACK