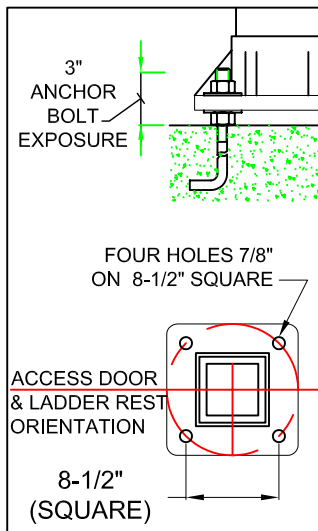


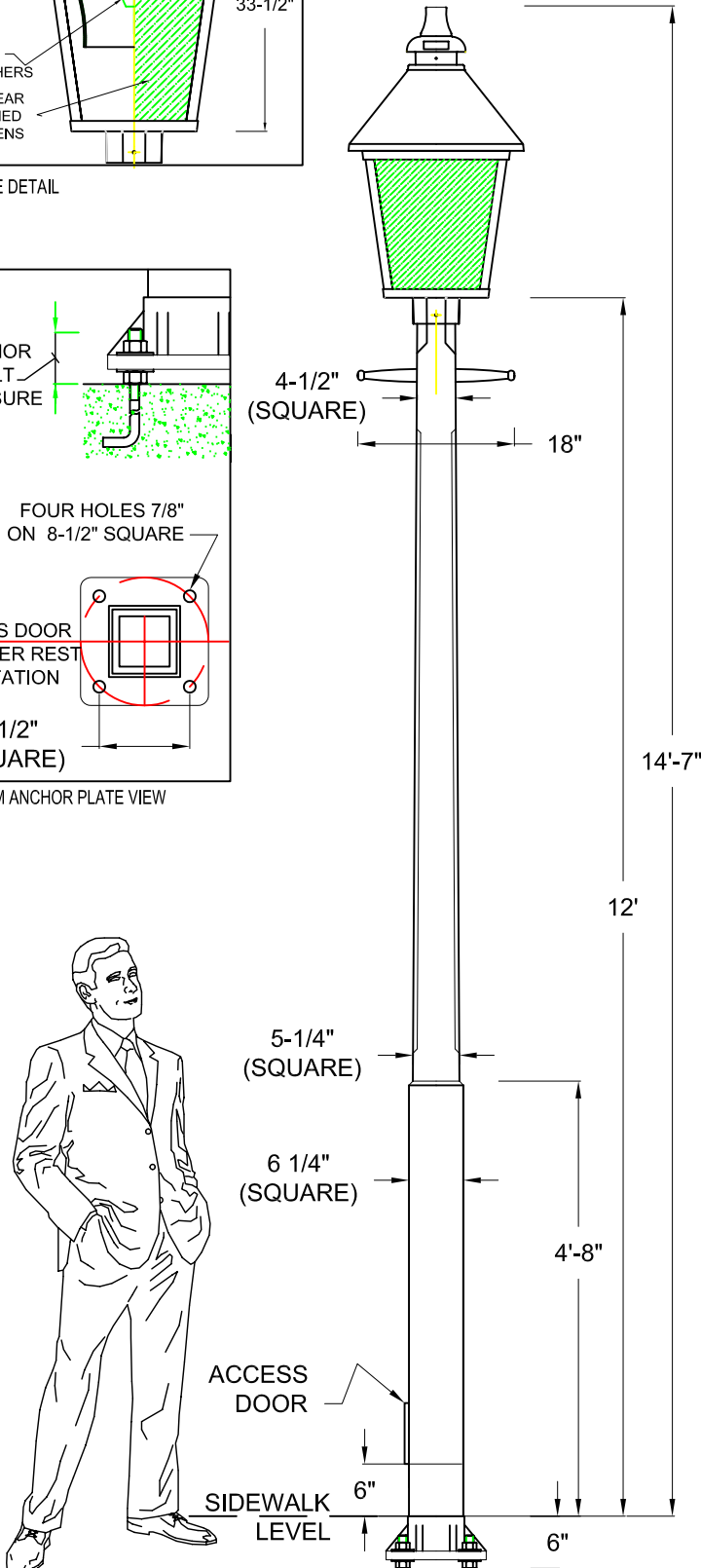
LUMINAIRE DETAIL

Please Note: Fabrication will not begin until this drawing is approved, signed and returned to HCI

- APPROVED
 - APPROVED AS NOTED
 - REJECTED
 - REVISE AND RESUBMIT
- By _____
- Date _____



BOTTOM ANCHOR PLATE VIEW



Approval Drawing

Light Std: F197-L-CP-SQ

Diffuser Material: Clear patterned acrylic.

Hardware: Stainless steel.
Luminaire Housing: The whole luminaire is made of cast aluminum. Top is fully hinged for easy access to lamp and ballast (lamp by others)

Optical System: Spun aluminum white finish reflector with clear acrylic refractor type V.

Light Distribution: IES Type V

Ballast: HPS high power factor mounted on removable plate. A quick disconnect wiring system allows for fast easy ballast maintenance.
 Wattage - 100W HPS
 Voltage - 120V
 Socket - Mogul (4KV).

Photocontrol: Receptacle only. Photocell by others.

Ladder Rest: Cast aluminum with 1/2" DIA steel threaded rod and bolted to the pole.

Pole: Pole square cross section (min. 3/4" TH) 6-1/4" at the bottom to 4'-8" high and 4-3/4" square tapered to the top. It shall be made of heavy ductile cast iron produced according to ISO 450-10. 5"W x 7"H hand hole for electrical work as necessary

Anchor Bolts: 4 galvanized 19mm (3/4") x 915mm (36") long. A steel bolt circle template is supplied by HCI.

Finish: Electrostatically applied, thermoset polyester powder-coat finish with XL4 four part corrosion inhibiting process.

Colour: Black RAL # 9011 (Luminaire only)
 Prime painted

Date: July 27, 2005 Drawing No: 4470-1
 Model: F197-L-FAC-100HPS-120V-AR-5-PEC-RAL9011
 CP-SQ-NEW-TCILDR-126-PP
 Project: CITY OF ALEXANDRIA

Please Note: Fabrication will not begin until this drawing is approved, signed and returned to HCI



1280 Fewster Drive, Mississauga, Ontario, Canada L4W 1A4
 Tel: (905) 238-2648 Fax: (905) 238-9060
 Toll Free Canada & USA 1-800-267-3175
 E: sales@hclighting.com WEB: www.hclighting.com