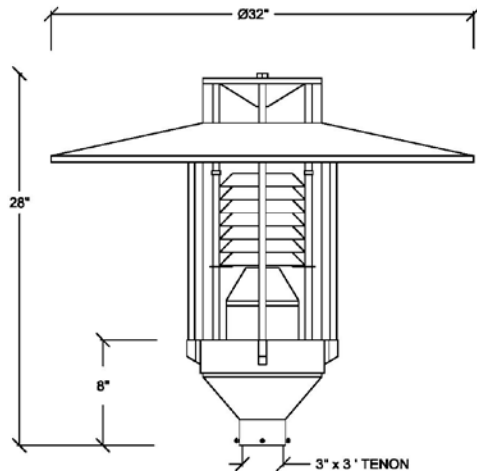


TRADITIONAL LUMINAIRES: F132



F132

Weight: 47 lbs.
 EPA: 3.20 sq. ft.
 Size: 32" W x 28" H



Specification Features

- Die-cast aluminum and spun housing for strength, elegance, and simple maintenance;
- Acrylic U.V. stabilized clear cylinder diffuser;
- Concealed gasket seals against insects, dust and moisture, IP 55;
- High power factor ballast with quick disconnect wiring system for easy maintenance;
- Medium and mogul base sockets optional;
- 70w to 250w PSMH and HPS lamp or QL/ICETRON or LED lamp operations;
- Quartz Restrike emergency lamp optional;
- IES type V;
- Electrostatically applied thermoset polyester powder-coated finish.

Product Ordering Number

| F132 | PT | CAC | 35W LED | QT 120V | GR IES V | FUS | GREY |
|-------------|-----------------------|-----------------------------|---|--|--|--|----------------------------------|
| SIZE | MOUNTING | DIFFUSER TYPE | LIGHT SOURCE | VOLTAGE | OPTICS | OPTIONS | COLOR |
| F132 | PT Post top | CAC Clear acrylic | Up to 100W CFL Fluorescent INC Incandescent LED 35W medium | QT (Quad tap 120, 208, 240, 277) TT (Tri tap 120, 277, 347) 120V Single 480 Single Please indicate voltage. If not specified factory will pre-wire at default 120v. | GR Glass refractor IES type V LV Louver BL Bare lamp suggested with white diffusers | FUS Internal fusing PCB Bottom type photocell | GREY CUSTOM |