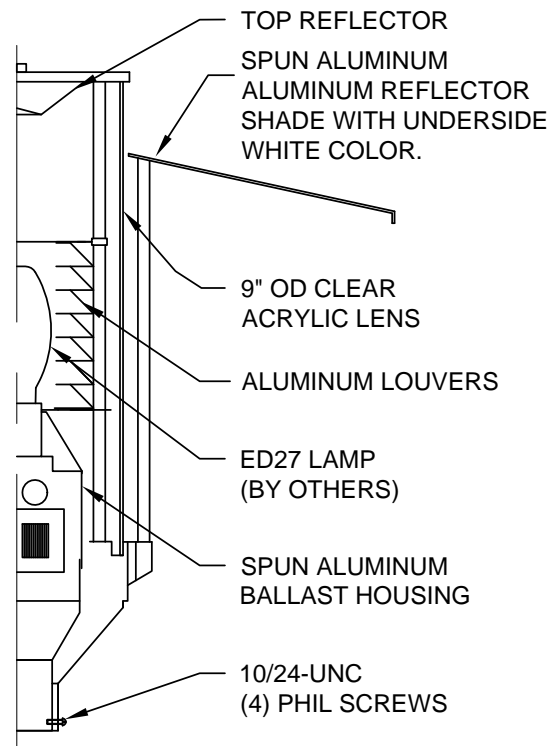
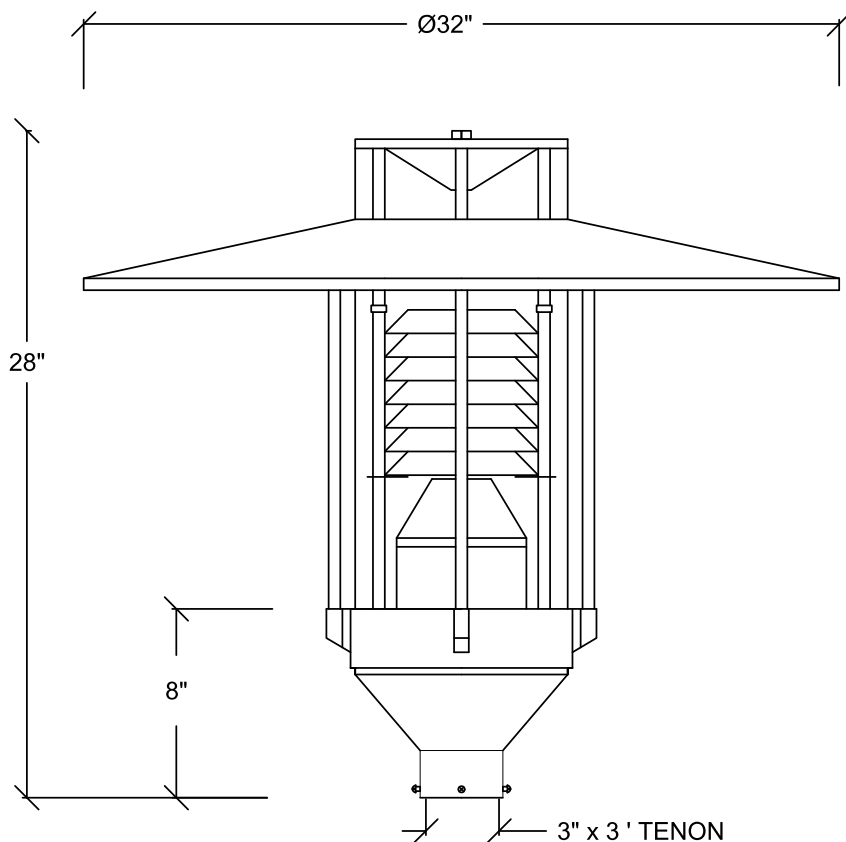


Please Note: Fabrication will not begin until this drawing is approved, signed and returned to HCI

- ☐ APPROVED
☐ APPROVED AS NOTED
☐ REJECTED
☐ REVISE AND RESUBMIT

By _____

Date _____



(C) 2012

HCI (Heritage Casting & Ironworks). Illustrations are copyrighted. Unauthorized reproduction prohibited. In an ongoing effort to improve quality/design, Heritage reserves the right to modify specifications without notice.

Diffuser Type: Acrylic U.V. stabilized clear cylindrical diffuser.

Hardware: Stainless steel.

Luminaire Housing: The luminaire consists of a cast aluminum fitter, four equally placed round ribs and a mechanically fastened with top aluminum shade.

Ballast: MH or HPS high power factor mounted on removable plate. A quick disconnect wiring system allows for fast easy ballast maintenance.

Wattage - Max. 150W (MH/HPS)
Voltage - 120V (QT)
Socket - Medium - (4kV)

Optical System: Louver reflector.

Light Distribution: IES Type V.

Tenon info: 3"H x 3"OD

Finish: Electrostatically applied thermoset polyester powder-coat finish.

Colour: Grey RAL7012

Approval Drawing

Luminaire: F132-L

Sales: JEFF Designer: BALA
Date: AUG.03,2012 Drawing No: 12785
Model: F132-L-CAC-100MH-120QT-LV5-RAL7012
Project: (QTY:)
Rep:

Please Note: Fabrication will not begin until this drawing is approved, signed and returned to HCI



1280 Fewster Drive, Mississauga, Ontario, Canada L4W 1A4
Tel: (905) 238-2648 Fax: (905) 238-9060
Toll Free Canada & USA 1-800-267-3175
E: sales@hclighting.com WEB: www.hclighting.com