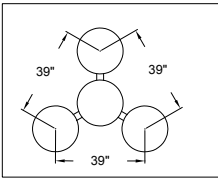
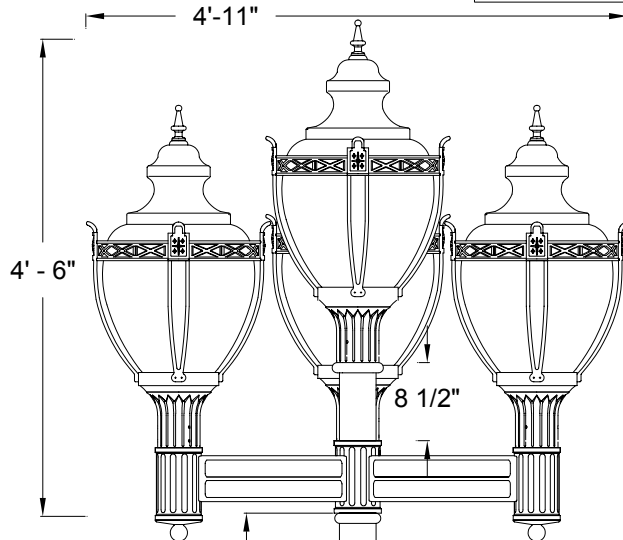
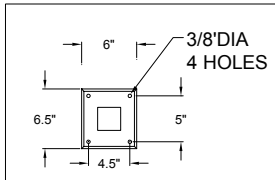


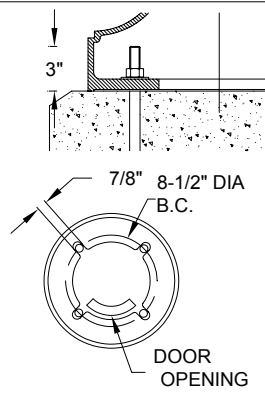
ARM CONFIGURATION: 4B



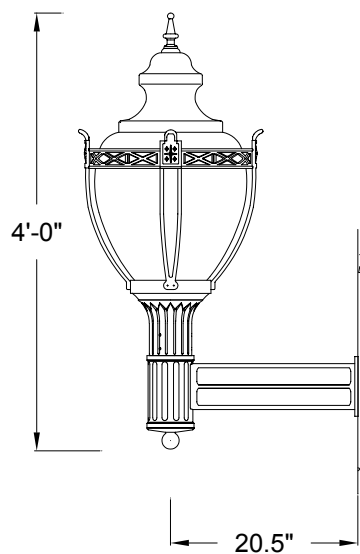
WALL MOUNTING PLATE VIEW



BOTTOM VIEW



ARM CONFIGURATION: WS



10'-6"



Please Note: Fabrication will not begin until this drawing is approved, signed and returned to HCI

<input type="checkbox"/>	APPROVED
<input type="checkbox"/>	APPROVED AS NOTED
<input type="checkbox"/>	REJECTED
<input type="checkbox"/>	REVISE AND RESUBMIT
By _____	
Date _____	

19"

Ø17"

(C) 2001 HCI (Heritage Casting & Ironworks). Illustrations are copyrighted. Unauthorized reproduction prohibited. In an ongoing effort to improve quality/design, Heritage reserves the right to modify specifications without notice.

Approval Drawing

Light Std: F113-L- A317-4B/WS-P405-CC

Diffuser Type: White

Diffuser Material: Acrylic
U.V. stabilized.

Optical System: Borosilicate glass
refractor. IES Type V.

Diffuser Holder Material: Cast Aluminum.
with four screws.

Ballast: MH high power factor mounted
on removable plate. A quick disconnect
wiring system allows for fast easy ballast
maintenance.

Wattage - 175W
Voltage - 120V
Socket - Mogul (4KV).

Arm Configuration: 4B and WS

Pole: Cast aluminum with 10 flutes,
tapered (6.5" to 4") shaft welded to
base with a min. wall thickness of 3/8".
7"W x 6"H Hand hole for installation of
anchor nuts and electrical work
as necessary.

Anchor bolts: 4 galvanized 19mm (3/4")
x 610 mm (24") long. A steel bolt circle
template is supplied by HCI

Finish: Electrostatically applied,
thermoset polyester powder-coat
finish with XL4 four part corrosion
inhibiting process.

Colour: Black RAL#9011

Date: Aug 26, 2002 Drawing No: 4237
Model: F113-L-B4-WAC-175MH-120V-BR-5-
-A317-4B/WS- P405-CC

Project: Marriott Eaton Ctr

Please Note: Fabrication will not begin until this
drawing is approved, signed and returned to HCI



1280 Fewster Drive, Mississauga, Ontario, Canada L4W 1A4
Tel: (905) 238-2648 Fax: (905) 238-9060
Toll Free Canada & USA 1-800-267-3175
E: sales@hclighting.com WEB: www.hclighting.com