

# A356 SERIES

## DESCRIPTION

The arm shall be HCI A356-\_\_\_\_ (specify configuration) arm, consisting of an arm with a double scroll, welded onto an adaptor and a 4"OD central column equipped with a pole tenon. Wall bracket shall be welded to a wall plate made of aluminum flat bar, 3"W x 1/2" thick.

## MATERIALS

The arm shall be made of two 2-3/8" OD, 0.154" thick aluminum extrusions and a scroll made of bent extruded 1"OD x 1/8" thick aluminum, all welded to the extruded non-fluted aluminum column. All hardware shall be temper resistant, stainless steel.

## CONFIGURATION

A variety of configurations is available, some of which are illustrated below. Those not illustrated are noted in the bottom left-hand corner. Non-standard configurations may be feasible, please consult factory for details.

## INSTALLATION

Arms shall be equipped with a 12"L x 3-1/2" OD round pole tenon and a 2" ID opening on the fixture side. *Post top* arms are not pre-wired and shall be wired by the contractor. *Wall brackets* shall be pre-wired, with a 12" slack for ease of wiring to source on the wall side and for wiring with wire nuts on the fixture side. Mounting hardware for wall brackets is not included.

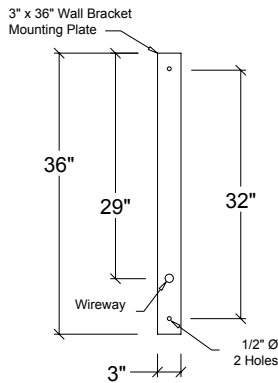
## FINISH

All applicable parts shall receive a standard electrostatically applied thermoset polyester powder coat smooth semi gloss finish with a four part corrosion inhibiting process.

## COLORS

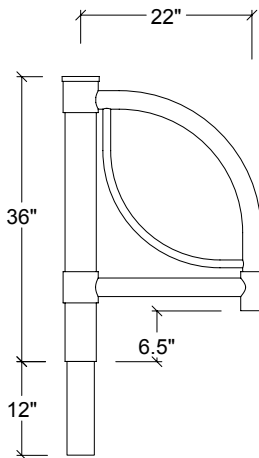
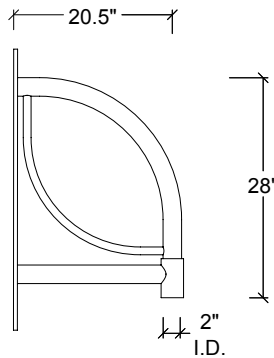
The five standard RAL colors are listed below. Simply check off the color applicable to your project. Custom colors are available for an additional charge. Please supply a 2" x 2" paint chip.

- Black** RAL 9011
- Green** RAL 6005
- Bronze** RAL 8019
- Grey** RAL 7012
- White** RAL 9016
- Custom**



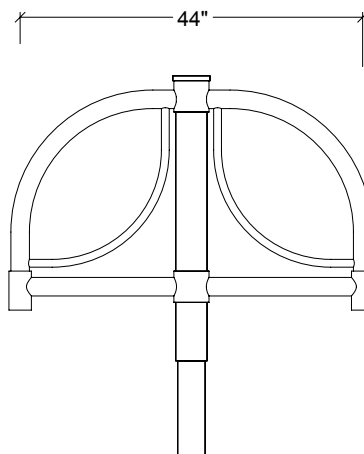
Weight: 13 lbs

**A356 - WS**



Weight: 19 lbs  
EPA: 2.30 sq ft

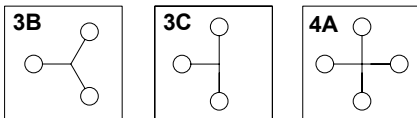
**A356 - 1A**



Weight: 28 lbs  
EPA: 3.9 sq ft

**A356 - 2A**

## ADDITIONAL CONFIGURATIONS AVAILABLE



(800) 267-3175 (905) 238-2648  
1280 Fewster Drive Mississauga  
Ontario L4W 1A4 Canada  
Fax (905) 238-9060  
Email [sales@hcilighting.com](mailto:sales@hcilighting.com)  
WEB [www.hcilighting.com](http://www.hcilighting.com)