

# A317 SERIES

## DESCRIPTION

Post top arms shall be made of cast aluminum welded to a round central column. Wall brackets shall be made of cast aluminum welded to a cast aluminum wall plate.

## MATERIALS

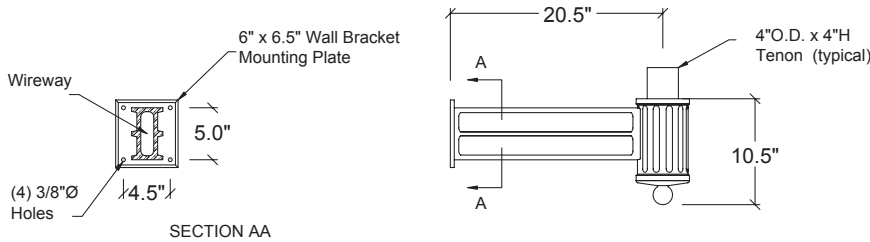
The decorative cast arm shall be welded to the central arm. The central column along with a decorative top finial (if applicable) shall be made of cast aluminum. All hardware shall be tamper resistant, stainless steel.

## CONFIGURATION

A variety of configurations are available, some of which are illustrated below. Those not illustrated are noted in the bottom left-hand corner. Non-standard configurations may be feasible, please consult factory for details.

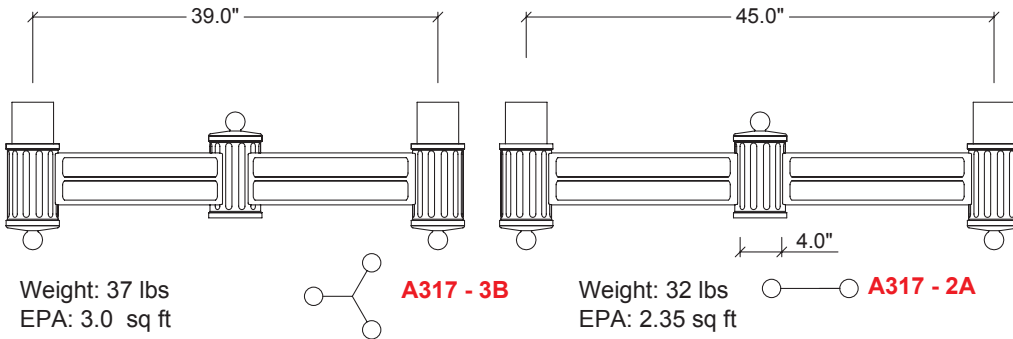
## INSTALLATION

Post top arms shall be equipped with a 3"H x 4" OD round opening for a pole tenon. Arms shall be equipped with 3" (76mm) diameter tenons for fixture mounting. *Post top* arms are not pre-wired and shall be wired by the contractor. *Wall brackets* shall be pre-wired, with a 12" slack for ease of wiring to source on the wall side and for wiring with wire nuts on the fixture side. Mounting hardware for wall brackets is not included.



Weight: 15 lbs

**A317 - WS**

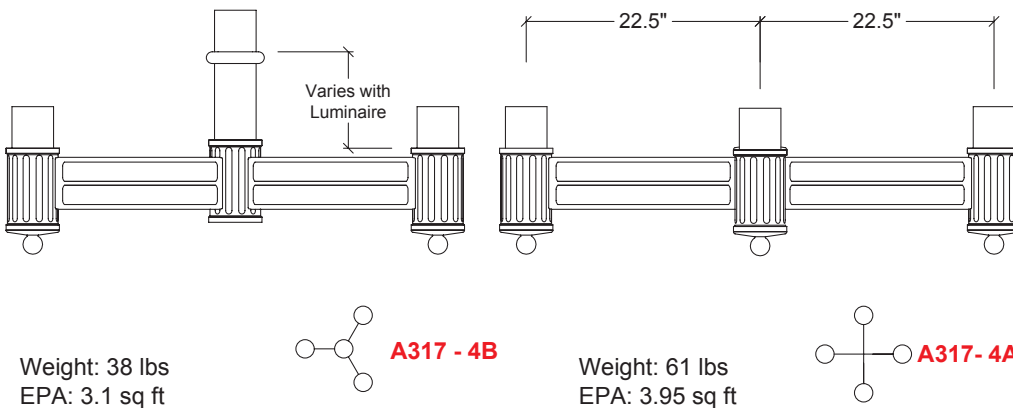


Weight: 37 lbs  
EPA: 3.0 sq ft

**A317 - 3B**

Weight: 32 lbs  
EPA: 2.35 sq ft

**A317 - 2A**



Weight: 38 lbs  
EPA: 3.1 sq ft

**A317 - 4B**

Weight: 61 lbs  
EPA: 3.95 sq ft

**A317 - 4A**

## FINISH

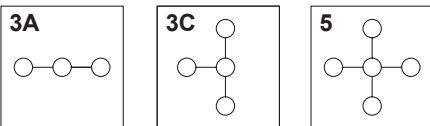
All applicable parts shall receive a standard electrostatically applied thermoset polyester powder coat smooth semi gloss finish with a four part corrosion inhibiting process.

## COLORS

The five standard RAL colors are listed below. Simply check off the color applicable to your project. Custom colors are available for an additional charge. Please supply a 2" x 2" paint chip.

- Black** RAL 9011
- Green** RAL 6005
- Bronze** RAL 8019
- Grey** RAL 7012
- White** RAL 9016
- Custom**

## ADDITIONAL CONFIGURATIONS AVAILABLE



(800) 267-3175 (905) 238-2648  
1280 Fewster Drive Mississauga  
Ontario L4W 1A4 Canada  
Fax (905) 238-9060  
Email [sales@hclighting.com](mailto:sales@hclighting.com)  
WEB [www.hclighting.com](http://www.hclighting.com)