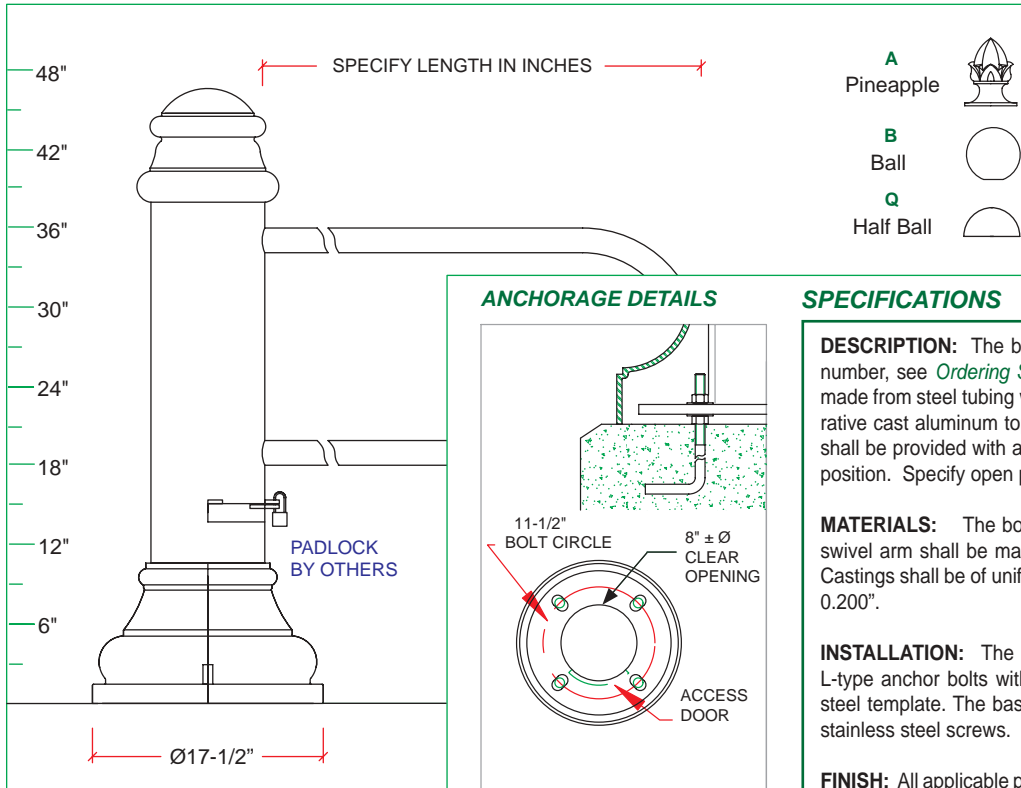





B647-SG SERIES BOLLARD

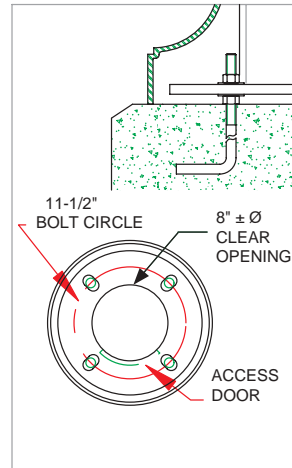


- A** Pineapple 
- B** Ball 
- Q** Half Ball 



(800) 267-3175 (905) 238-2648
 1280 Fewster Drive Mississauga
 Ontario L4W 1A4 Canada
 Fax (905) 238-9060
 Email sales@hclighting.com
 WEB www.hclighting.com

ANCHORAGE DETAILS



SPECIFICATIONS

DESCRIPTION: The bollard shall be HCI's _____ (indicate model number, see *Ordering Sequence Example* to the left) The bollard shall be made from steel tubing with a two piece cast aluminum base cover. A decorative cast aluminum top shall be welded to the bollard body. The bollard shall be provided with a steel swivel arm, lockable both in open and closed position. Specify open position, see diagram below. Padlock by others.

MATERIALS: The bollard shall be made of 8-5/8" OD steel tubing. The swivel arm shall be made of 1-7/8" OD steel tubing, welded to the bollard. Castings shall be of uniform wall thickness with a minimum wall thickness of 0.200".

INSTALLATION: The bollard shall be provided with four 3/4" OD x 17" L L-type anchor bolts with two nuts and two washers per bolt and a sturdy steel template. The base cover shall be secured with two tamper resistant stainless steel screws.

FINISH: All applicable parts shall receive a standard electrostatically applied thermoset polyester powder coat smooth semi gloss finish with a four part corrosion inhibiting process.

COLORS: The five standard RAL colors are Black 9011, Green 6005, Bronze 8019, Grey 7012 and White 9016. Other colors extra.

Bollard Ordering Sequence Example

BOLLARD — TOP — OPEN — LENGTH — COLOR				
B647-SG	- A	- LEFT	- 60	- RAL 9011

B655-SG SERIES BOLLARD

DESCRIPTION: The bollard shall be HCI's _____ (indicate model number, see *Ordering Sequence Example* above). The bollard shall be made from steel tubing with a two piece cast aluminum base cover. A decorative cast aluminum top shall be welded to the bollard body. The bollard shall be provided with a swivel arm, lockable both in open and closed position. Specify open position, see diagram below to the right. Padlock by others.

MATERIALS: The bollard shall be made of steel 8-5/8" OD tubing. The swivel arm shall be made of 1-7/8" OD steel tubing. Base covers shall be of uniform wall thickness with a min. wall thickness of 0.200".

INSTALLATION: The bollard shall be provided with four 3/4" OD x 17" L L-type anchor bolts with two nuts and two washers per bolt and a sturdy steel template, which shall install on an 11-1/2" bolt circle. The base cover shall be secured with two tamper resistant stainless steel screws.

FINISH: All applicable parts shall receive a standard electrostatically applied thermoset polyester powder coat smooth semi gloss finish with a four part corrosion inhibiting process.

COLORS: The five standard RAL colors are Black 9011, Green 6005, Bronze 8019, Grey 7012 and White 9016. Other colors extra.

